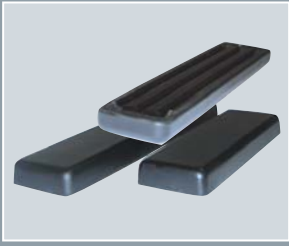


ARMPAD OPTIONS



MULTIPOSITION FLAT ARM PADS

- Soft, gel-like feel provides extra comfort and protection for arms
- Highly durable skinned polyurethane resists cracking and peeling
- Triple track extrusion allows adjustability of mounting position and attachment location for other accessories
- 3" wide; desk length 10" or full length 14"



ERGONOMIC ARM TROUGH/HAND PAD KIT

- Molded, skinned polyurethane fits the natural arm curvature
- Unique cut-out at elbow provides users with flexibility of various arm positions
- Triple track extrusion allows a variety of mounting positions
- Complete with flat hand pad or interfaces with other manufacturer's hand pieces



GEL ARM PADS

- Fabric covered polymer gel arm pads
- Provides extra protection for highly sensitive arms
- Available in 3 models:
Std. Narrow 12" x 2"
Std. Wide 12" x 3½"
Long Wide 14" x 3½"

MULTI-AXIS HARDWARE OPTION



MULTI-AXIS ARMREST MOUNT

- Single locking bolt or ratchet handle allows infinite adjustment of angle and rotation of armpad or arm trough
- Ability to capture complex positions of client's arm/hand
- Universal 7/8" clamp allows it to fit on any wheelchair armrest, manual or power
- Low profile bracket easily interfaces with the Motion Concept's Gel Armpad, Arm Trough or Multi-Position Flat Armpad

LAP TRAY OPTIONS



PRIVACY FLAP

- For use on Posture backs and Elite backs/same fabric
- Designed to cover the gap between the bottom of the backrest and the seat pan
- Attaches with hook and loop fasteners



FLIP AND FOLD AWAY TRAY

- Tray flips up and rotates back out of the way when not in use
- Universal Fit: With the Motion Concepts' flat arm pad the tray can be attached to any wheelchair armrest
- A quick release feature allows the tray to be easily removed from the armrest
- Angle adjustment so that tray can be positioned level with chair
- Cup holder hole for travel mugs
- Transparent tray



DROP BASE

- Includes built-in drop base, drop hooks, DuraClip fasteners
- Allows adjustment of seat angle
- Fits width 30cm/12" - 50cm/20", depth 30cm/12" - 47cm/19"



PELVIC OBLIQUITY KIT

- Easily installed on all Matrix-V_i / Kid*ab*ra-V_i cushions/bases
- Accommodates 13mm/½" or 26mm/1" obliquities



CUSTOM MODIFICATIONS

- Leg length discrepancies, width/depth reductions
- Foam, inner and outer covers modified to your specifications



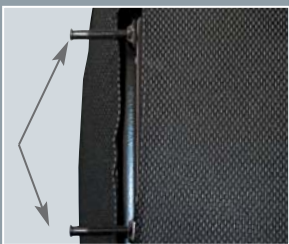
CUSHION RIGIDIZER

- Lightweight, slim profile solid seat insert
- Contoured to eliminate "hammock effect" of sling upholstery



FOAM-IN-PLACE KIT

- Individually molded insert produced in minutes with user seated in back
- Optional high stretch cover available



EXTRA LONG

- Extended mounting pins available for Matrix PB
- Allows the back to fit chairs up to 5cm/2" wider



VISCO FOAM UPGRADE

- Laminate of 13mm/½" high resilient foam and 16mm/5/8" Visco Foam
- Available on Matrix PB and Elite backs



CANE REPLACEMENT

- Replaces existing back canes which are less than 26mm/1" diameter for use with any Matrix back



HEADREST ADAPTER

- Allows the headrest to be mounted directly onto Matrix Elite backs
- Available in 3 sizes



EXTENDED SHEAR REDUCTION MOUNTING HARDWARE

- Allows all Matrix backs to be mounted directly to Motion Concepts TRX seating