

2.0 - Technical Support Materials:

IV. Ordering of Parts

the TRx Parts Manual

Our Engineering Department has created a detailed TRx Parts Manual for the numerous power positioning systems that have been developed by Motion Concepts. Using Solid Works software, the parts manual illustrates complete assemblies and sub-assemblies, by means of exploded parts drawings. Each part/ component is identified and numbered on the drawings. A Bill of Materials (**BOM**) (provided for each drawing) will provide the associated Motion Concept's **part number** as well as a **description** of the part. (refer to **Figure 1.0** and **Figure 2.0** (p. 10-11)) for examples of our parts drawings)

If you require a replacement part from any of our seating systems, simply call our Customer Service Department and order the replacement by the part number and description stated in the TRx Parts Manual. The Parts Manual has also been made available on-line, so parts can also be referenced and ordered via the Motion Concepts website at www.motionconcepts.com.

Please note that our TRx Parts Manual does not include any of our **electronics**. A separate set of manuals for each of the three most popular powerbases (Invacare, Quickie and Pride) has been created for our electronics. These manuals contain specific wiring schematic diagrams for the various seating system options available on each powerbase. Each schematic diagram will identify the necessary cables, harnesses, switches and relay boxes for a particular system and identify how/ where they are connected. (see **Figure 4.0**, p.31 for a sample wiring diagram).

If you require a replacement for any electronics/ power cables/ harnesses, or would like a copy of our Wiring Diagram manuals, please contact our Customer Service Department for assistance.

Understanding the TRx Parts Manual

The Table below provides a list of the various *prefixes* used in our part numbers, as well as a brief explanation for each. These prefixes will appear in the BOM's throughout the TRx Parts Manual.

Prefix	Description	Note
TRX	Fabricated Part	- part engineered by Motion Concepts
TRM	Miscellaneous Part	- purchased part (supplied as a finished good.)
TRH	Hardware	- purchased part (supplied as a finished good.)
TRC	Assembly Drawing (Assembled Part)	- each referenced TRC has it's own drawing. - a TRC assembly drawing may also reference a separate TRC drawing (see Figure 2.0)
TRA	Actuators	- purchased part (supplied as a finished good.)

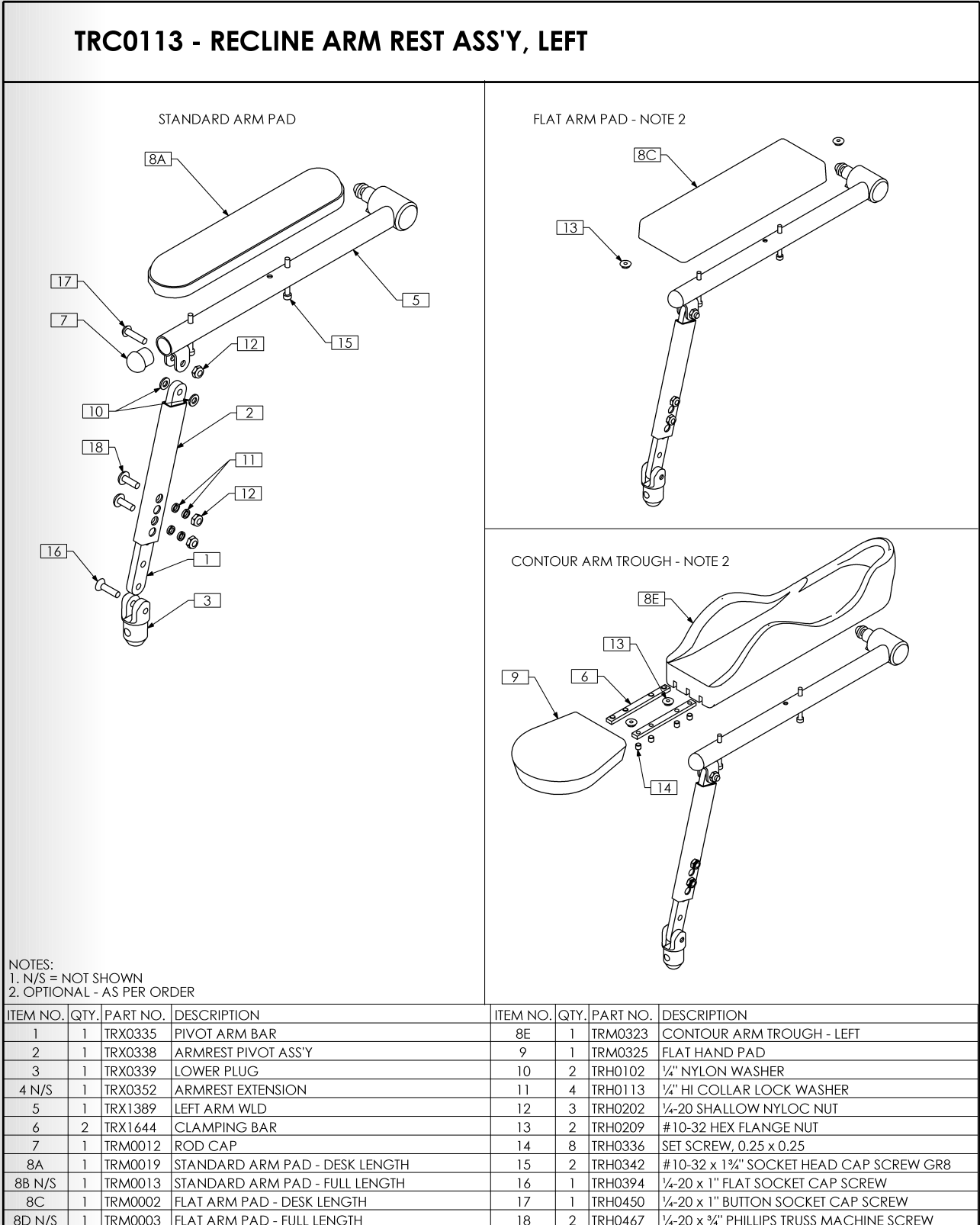
NOTES

2.0 - Technical Support Materials:

IV. Ordering of Parts

The following drawings (Figure 1.0 and Figure 2.0) are samples taken directly from our TRx Parts Manual for reference:

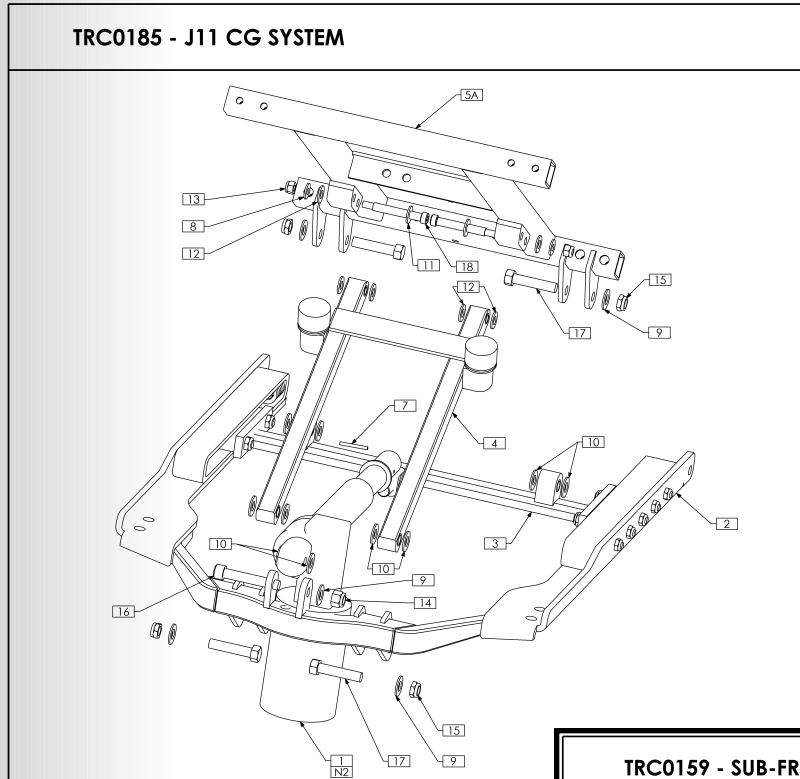
Figure 1.0



2.0 - Technical Support Materials:

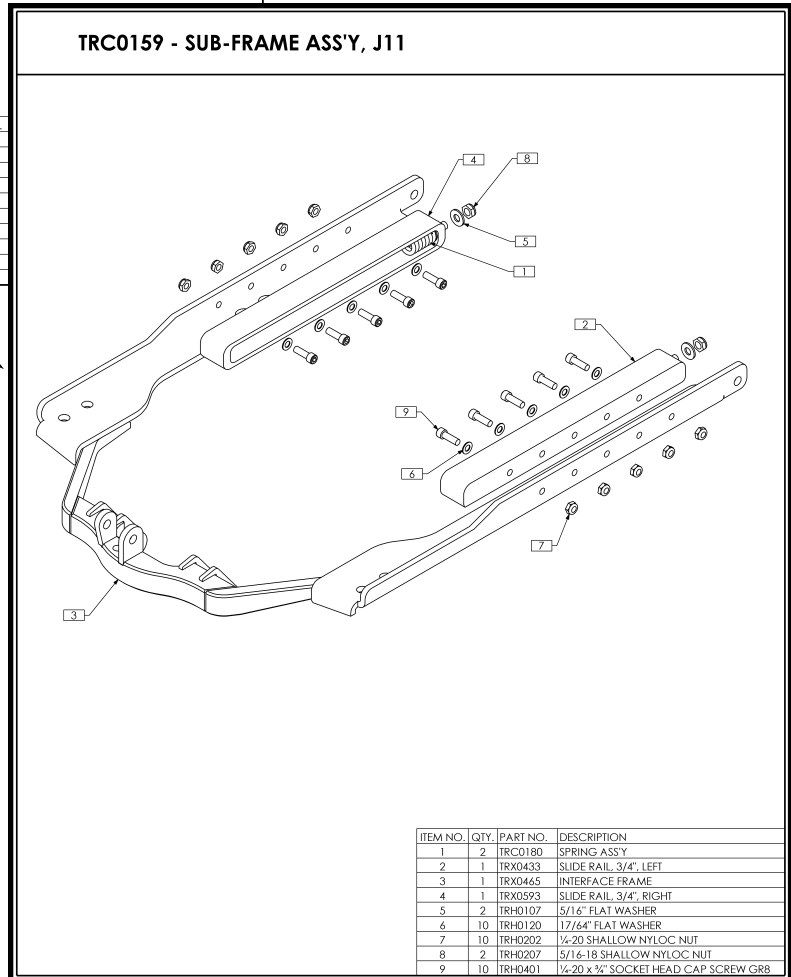
IV. Ordering of Parts

Figure 2.0



NOTES:
 1. N/S = NOT SHOWN
 2. TRM0010 ACTUATOR BOOT NOT REQUIRED ON JAZZY 1120-2000

ITEM NO.	QTY.	PART NO.	DESCRIPTION	ITEM NO.	QTY.	PART NO.
1	1	TRA0602	ACTUATOR	9	5	TRH0104
2	1	TRC0159	SUB-FRAME ASS'Y	10	10	TRH0105
3	1	TRC0160	SLIDER ASSY	11	2	TRH0107
4	1	TRC0161	PIVOT FRAME ASS'Y	12	6	TRH0109
5A	1	TRX0294	SEAT FRAME 16", 17", & 18" WIDTHS	13	2	TRH0201
5B N/S	1	TRX0296	SEAT FRAME 19", 20" & 21" WIDTHS	14	1	TRH0204
5C N/S	1	TRX0531	SEAT FRAME 22", 23" & 24" WIDTHS	15	4	TRH0205
6 N/S	1	TRM0010	RECLINE ACTUATOR BOOT	16	1	TRH0348
7	1	TRH0034	SLOTTED SPRING, TENSION PIN 0.125 x 1.125	17	4	TRH0370
8	2	TRH0101	1/2" FLAT WASHER	18	2	TRH0410



ITEM NO.	QTY.	PART NO.	DESCRIPTION
1	2	TRC0180	SPRING ASSY
2	1	TRX0433	SLIDE RAIL, 3/4", LEFT
3	1	TRX0465	INTERFACE FRAME
4	1	TRX0593	SLIDE RAIL, 3/4", RIGHT
5	2	TRH0107	5/16" FLAT WASHER
6	10	TRH0120	17/64" FLAT WASHER
7	10	TRH0202	1/4-20 SHALLOW NYLOC NUT
8	2	TRH0207	5/16-18 SHALLOW NYLOC NUT
9	10	TRH0401	1/4-20 x 1/2" SOCKET HEAD CAP SCREW GR8