



INVACARE® MATRX®  
**SEATING SERIES**  
MEDICARE COVERAGE GUIDE

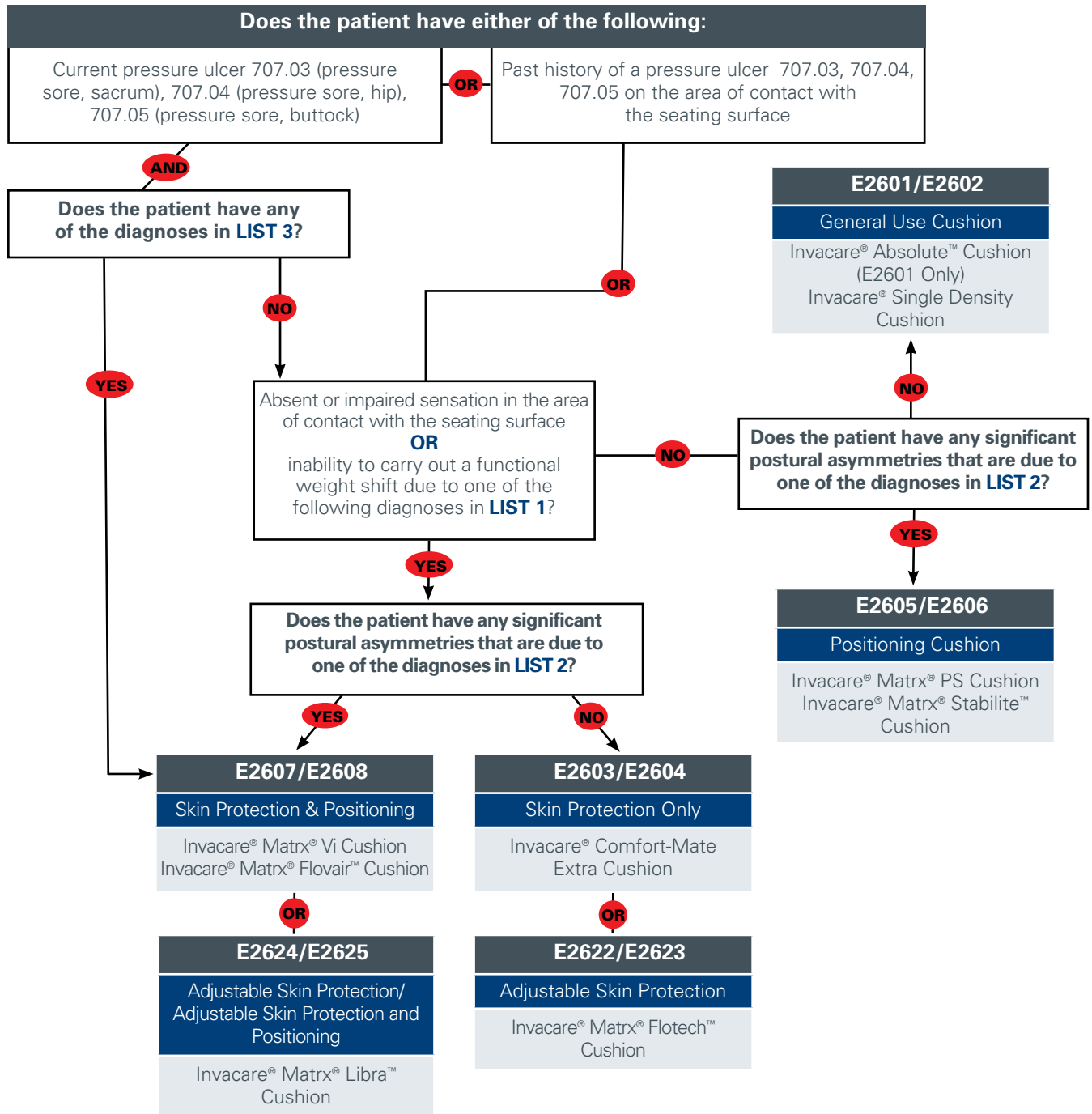


Invacare Corporation and Motion Concepts have joined forces and combined product portfolios to offer you the Invacare Matrix Seating Series—simple and yet highly effective solutions to meet the widest range of user needs.

This information is not intended to be, nor should it be considered billing or legal advice. Providers are responsible for determining the appropriate billing codes when submitting claims to the Medicare Program and should consult an attorney or other advisor to discuss specific situations in further detail.

# INVACARE® MATRIX® SEAT CUSHIONS

In order to qualify for a wheelchair seat cushion, the individual must have a prescription from the physician and must meet Medicare coverage criteria for a manual or power wheelchair with a sling/solid seat/back. **PLUS**



**LIST 1**

- Late effects of Acute Poliomyelitis (post Polio paralysis) **138**
- Other Causes of Myelitis **323.82**
- Leukodystrophy **330.0**
- Cerebral Lipidoses **330.1**
- Cerebral Degeneration in Generalized Lipidoses **330.2**
- Cerebral Degeneration in childhood **330.3 – 330.9**
- Alzheimer's Disease **331.0**
- Paralysis Agitans (Parkinson's Disease) **332.0**
- Huntington's Chorea **333.4**
- Genetic Torsion Dystonia **333.6**
- Athetoid Cerebral Palsy **333.71**
- Friedreich's Ataxia **334.0**
- Hereditary Spastic Paraplegia **334.1**
- Primary Cerebellar Degeneration **334.2**
- Other Spinocerebellar Diseases **334.8**
- Spinocerebellar Disease, unspecified **334.9**
- Anterior Horn Cell Disease **335**
- Werdnig-Hoffmann Disease **335.0**
- Spinal Muscular Atrophy **335.1**
- Spinal Muscular Atrophy, unspecified **335.10**
- Kugelberg-Welander Disease **335.11**
- Adult spinal Muscular Atrophy **335.19**
- Motor Neuron Disease **335.2**
- Amyotrophic Lateral Sclerosis **335.20**
- Progressive Muscular Atrophy **335.21**
- Pseudobulbar Palsy - Anterior Horn Cell Disease unspecified **335.23 – 335.9**
- Syringomyelia and Syringobulbia - Myelopathy in other diseases classified elsewhere **336.0 – 336.3**
- Multiple Sclerosis **340**
- Neuromyelitis Optica - Demyelinating Disease of Central Nervous System unspecified **341.0 – 341.9**
- Flaccid Hemiplegia affecting unspecified side **342.0**
- Flaccid Hemiplegia affecting dominant side **342.01**
- Flaccid Hemiplegia affecting non-dominant side **342.02**
- Spastic Hemiplegia affecting unspecified side **342.10**
- Spastic Hemiplegia affecting dominant side **342.11**
- Spastic Hemiplegia affecting non-dominant side **342.12**
- Other Specified Hemiplegia affecting unspecified side **342.80**
- Other Specified Hemiplegia affecting dominant side **342.81**
- Other Specified Hemiplegia affecting side **342.82**
- Hemiplegia, affecting unspecified side **342.90**
- Hemiplegia, unspecified affecting dominant side **342.91**
- Hemiplegia, unspecified affecting side **342.92**
- Congenital Diplegia - Infantile Cerebral Palsy unspecified **343.0 – 343.9**
- Quadriplegia unspecified **344.00**
- Quadriplegia C1-C4, complete **344.01**
- Quadriplegia C1-C4, incomplete **344.02**
- Quadriplegia C5-C7, complete **344.03**
- Quadriplegia C5-C7, incomplete **344.04**
- Other Quadriplegia **344.09**
- Traumatic brain injury resulting in Quadriplegia and other Quadriplegia **344.09**
- Paraplegia **344.1**
- Congenital Hereditary Muscular Dystrophy **359**
- Hereditary Progressive Muscular Dystrophy **359.1**
- Hemiplegia/Hemiparesis, affecting unspecified side **438.20**
- Hemiplegia/Hemiparesis, affecting dominant side **438.21**
- Hemiplegia/Hemiparesis, affecting non-dominant side **438.22**
- Pressure Ulcer **707.03 – 707.05**
- Other specific muscle disorder **728.3**
- Spina Bifida with Hydrocephalus, unspecified region **741.00**
- Spina Bifida with Hydrocephalus, cervical region **741.01**
- Spina Bifida with Hydrocephalus, dorsal (thoracic) region **741.02**
- Spina Bifida with Hydrocephalus, lumbar region **741.03**
- Spina Bifida without Hydrocephalus, unspecified region **741.90**
- Spina Bifida without Hydrocephalus, cervical region **741.91**
- Other specified nonteratogenic anomalies **754.89**
- Osteogenesis Imperfecta **756.51**

**LIST 3**

- Other causes of Myelitis **323.82**
- Friedreich's Ataxia **334.0**
- Hereditary Spastic Paraplegia **334.1**
- Primary Cerebellar Degeneration **334.2**
- Other Spinocerebellar Degeneration **334.8**
- Spinocerebellar Disease, unspecified **334.9**
- Monoplegia of lower limb affecting unspecified side **344.30**
- Monoplegia of lower limb affecting dominant side **344.31**
- Monoplegia of lower limb affecting non-dominant side **344.32**
- Monoplegia of lower limb affecting unspecified side **438.40**
- Monoplegia of lower limb affecting dominant side **438.41**
- Monoplegia of lower limb affecting non-dominant side **438.42**
- Osteogenesis Imperfecta **756.51**
- Traumatic Amputation of leg(s)(complete) (partial) unilateral at or above knee without complication - Traumatic Amputation of leg(s)(complete) (partial) bilateral (any level) complicated **897.2 – 897.7**

**LIST 2**

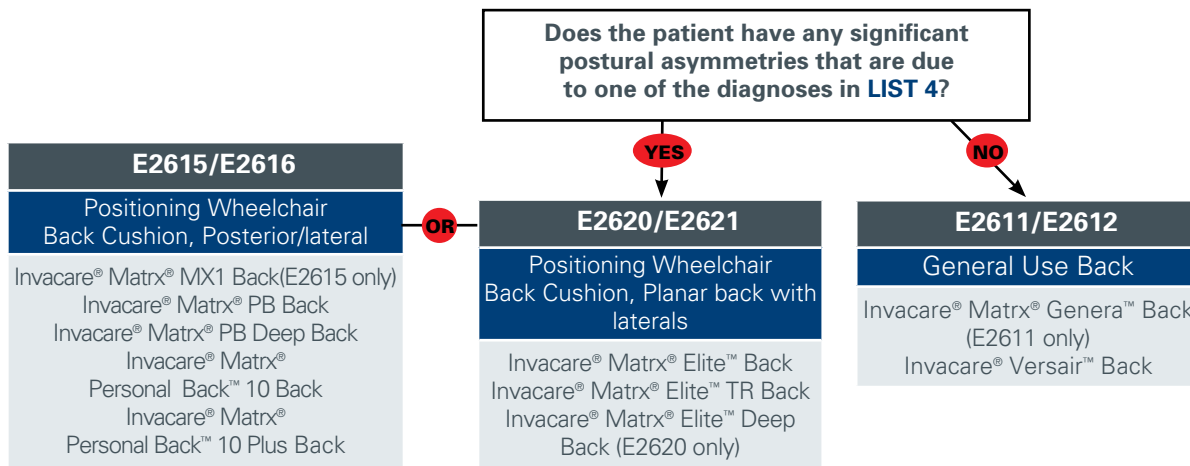
- Late effects of Acute Poliomyelitis **138**
- Other Causes of Myelitis **323.82**
- Leukodystrophy **330.0**
- Cerebral Lipidoses **330.1**
- Cerebral Degeneration in Generalized Lipidoses **330.2**
- Cerebral Degeneration in childhood **330.3 – 330.9**
- Alzheimer's Disease **331.0**
- Paralysis Agitans (Parkinson's Disease) **332.0**
- Huntington's Chorea **333.4**
- Genetic Torsion Dystonia **333.6**
- Athetoid Cerebral Palsy **333.71**
- Friedreich's Ataxia **334.0**
- Hereditary Spastic Paraplegia **334.1**
- Primary Cerebellar Degeneration **334.2**
- Other Spinocerebellar Diseases **334.8**
- Spinocerebellar Disease, unspecified **334.9**
- Anterior Horn Cell Disease **335**
- Werdnig-Hoffmann Disease **335.0**
- Spinal Muscular Atrophy **335.1**
- Spinal Muscular Atrophy, unspecified **335.10**
- Kugelberg-Welander Disease **335.11**
- Adult Spinal Muscular Atrophy **335.19**
- Motor Neuron Disease **335.2**
- Amyotrophic Lateral Sclerosis **335.20**
- Progressive Muscular Atrophy **335.21**
- Pseudobulbar Palsy - Anterior Horn Cell Disease unspecified **335.23 – 335.9**
- Syringomyelia and Syringobulbia - Myelopathy in other diseases classified elsewhere **336.0 – 336.3**
- Multiple Sclerosis **340**
- Neuromyelitis Optica - Demyelinating Disease of Central Nervous System unspecified **341.0 – 341.9**
- **342 Hemiplegia and Hemiparesis:**
- Flaccid Hemiplegia affecting unspecified side **342.0**
- Flaccid Hemiplegia affecting dominant side **342.01**
- Flaccid Hemiplegia affecting non-dominant side **342.02**
- Spastic Hemiplegia affecting unspecified side **342.10**
- Spastic Hemiplegia affecting dominant side **342.11**
- Spastic Hemiplegia affecting non-dominant side **342.12**
- Other Specified Hemiplegia affecting unspecified side **342.80**
- Other Specified Hemiplegia affecting dominant side **342.81**
- Other Specified Hemiplegia affecting non-dominant side **342.82**
- Hemiplegia, unspecified affecting unspecified side **342.90**
- Hemiplegia, unspecified affecting dominant side **342.91**
- Hemiplegia, unspecified affecting non-dominant side **342.92**
- Congenital Diplegia - Infantile Cerebral Palsy unspecified **343.0 – 343.9**
- Quadriplegia unspecified **344.00**
- Quadriplegia C1-C4, complete **344.01**
- Quadriplegia C1-C4, incomplete **344.02**
- Quadriplegia C5-C7, complete **344.03**
- Quadriplegia C5-C7, incomplete **344.04**
- Quadriplegia unspecified - Paraplegia **344.1**
- Traumatic brain injury resulting in Quadriplegia **344.09**
- Monoplegia of lower limb affecting unspecified side **344.30**
- Monoplegia of lower limb affecting dominant side **344.31**
- Monoplegia of lower limb affecting non-dominant side **344.32**
- Congenital Hereditary Muscular Dystrophy **359.0**
- Hereditary Progressive Muscular Dystrophy **359.1**
- Hemiplegia/Hemiparesis affecting unspecified side **438.20**
- Hemiplegia/Hemiparesis affecting dominant side **438.21**
- Hemiplegia/Hemiparesis affecting non-dominant side **438.22**
- **Late effects of Cerebrovascular Disease**
- Monoplegia of lower limb affecting unspecified side **438.40**
- Monoplegia of lower limb affecting dominant side **438.41**
- Monoplegia of lower limb affecting non-dominant side **438.42**
- Spina Bifida with Hydrocephalus, unspecified region **741.00**
- Spina Bifida with Hydrocephalus, cervical region **741.01**
- Spina Bifida with Hydrocephalus, dorsal (thoracic) region **741.02**
- Spina Bifida with Hydrocephalus, lumbar region **741.03**
- Spina Bifida without Hydrocephalus, unspecified region **741.90**
- Spina Bifida without Hydrocephalus, cervical region **741.91**
- Spina Bifida without Hydrocephalus, dorsal (thoracic) region **741.92**
- Spina Bifida without Hydrocephalus, lumbar region **741.93**
- Osteogenesis Imperfecta **756.51**
- Traumatic Amputation of leg(s) (complete) (partial) unilateral at or above knee without complication - Traumatic Amputation of leg(s) (complete) (partial) Bilateral (any level) complicated **897.2 – 897.7**

This information is not intended to be, nor should it be considered billing or legal advice. Providers are responsible for determining the appropriate billing codes when submitting claims to the Medicare Program and should consult an attorney or other advisor to discuss specific situations in further detail.



# INVACARE® MATRX® BACK SUPPORTS

In order to qualify for a wheelchair back cushion, the individual must have a prescription from the physician and must meet Medicare coverage criteria for a manual or power wheelchair with a sling/solid seat/back. **PLUS**



**Invacare Corporation**  
www.invacare.com

#### USA

One Invacare Way  
Elyria, Ohio  
44035-4190  
(800) 333-6900

#### Canada

570 Matheson Blvd. E.  
Unit 8  
Mississauga, Ontario  
L4Z 4G4 Canada  
(800) 668-5324

#### Motion Concepts

www.motionconcepts.com

#### USA

700 Ensminger Rd., Suite 112  
Tonawanda, NY 14150  
(888) 433-6818  
Fax: (888) 433-6834

#### Canada

84 Citation Dr., Unit 1-7  
Concord, ON L4K 3C1  
(866) 748-7943  
(905)-695-0134  
Fax: 905-695-0138

#### © 2015

Invacare Corporation.  
All rights reserved.  
Trademarks are identified by the symbols ™ and ®.  
All trademarks are owned by or licensed to Invacare Corporation unless otherwise noted. Matr<sup>®</sup> is a registered trademark of Motion Concepts.  
Specifications are subject to change without notification.  
Form No. 11-079  
Rev. 04/15  
150369

**matrx**<sup>®</sup>  
SEATING SERIES



**Yes, you can.™**

## LIST 4

- Late effects of Acute Poliomyelitis **138**
- Other Causes of Myelitis **323.82**
- Leukodystrophy **330.0**
- Cerebral Lipidoses **330.1**
- Cerebral Degeneration in Generalized Lipidoses **330.2**
- Cerebral Degeneration in childhood **330.3 – 330.9**
- Alzheimer's Disease **331.0**
- Paralysis Agitans (Parkinson's Disease) **332.0**
- Huntington's Chorea **333.4**
- Genetic Torsion Dystonia **333.6**
- Athetoid Cerebral Palsy **333.71**
- Friedreich's Ataxia **334.0**
- Hereditary Spastic Paraplegia **334.1**
- Primary Cerebellar Degeneration **334.2**
- Other Spinocerebellar Diseases **334.8**
- Spinocerebellar Disease, unspecified **334.9**
- Anterior Horn Cell Disease **335**
- Werdnig-Hoffmann Disease **335.0**
- Spinal Muscular Atrophy **335.1**
- Spinal Muscular Atrophy, unspecified **335.10**
- Kugelberg-Welander Disease **335.11**
- Adult Spinal Muscular Atrophy **335.19**
- Motor Neuron Disease **335.2**
- Amyotrophic Lateral Sclerosis **335.20**
- Progressive Muscular Atrophy **335.21**
- Pseudobulbar Palsy - Anterior Horn Cell Disease unspecified **335.23 – 335.9**
- Syringomyelia and Syringobulbia - Myelopathy in other diseases classified elsewhere **336.0 – 336.3**
- Multiple Sclerosis **340**
- Neuromyelitis Optica - Demyelinating Disease of Central Nervous System unspecified **341.0 – 341.9**
- 342 Hemiplegia and Hemiparesis:**
  - Flaccid Hemiplegia affecting unspecified side **342.0**
  - Flaccid Hemiplegia affecting dominant side **342.01**
  - Flaccid Hemiplegia affecting non-dominant side **342.02**
  - Spastic Hemiplegia affecting unspecified side **342.10**
  - Spastic Hemiplegia affecting dominant side **342.11**
  - Spastic Hemiplegia affecting non-dominant side **342.12**

- Other Specified Hemiplegia affecting unspecified side **342.80**
- Other Specified Hemiplegia affecting dominant side **342.81**
- Other Specified Hemiplegia affecting non-dominant side **342.82**
- Hemiplegia, unspecified affecting unspecified side **342.90**
- Hemiplegia, unspecified affecting dominant side **342.91**
- Hemiplegia, unspecified affecting non-dominant side **342.92**
- Congenital Diplegia - Infantile Cerebral Palsy unspecified **343.0 – 343.9**
- Quadriplegia unspecified **344.00**
- Quadriplegia C1-C4, complete **344.01**
- Quadriplegia C1-C4, incomplete **344.02**
- Quadriplegia C5-C7, complete **344.03**
- Quadriplegia C5-C7, incomplete **344.04**
- Traumatic brain injury resulting in Quadriplegia **344.09**
- Quadriplegia unspecified - Paraplegia **344.1**
- Monoplegia of lower limb affecting unspecified side **344.30**
- Monoplegia of lower limb affecting dominant side **344.31**
- Monoplegia of lower limb affecting non-dominant side **344.32**
- Congenital Hereditary Muscular Dystrophy **359.0**
- Hereditary Progressive Muscular Dystrophy **359.1**
- Hemiplegia/Hemiparesis affecting unspecified side **438.20**
- Hemiplegia/Hemiparesis affecting dominant side **438.21**
- Hemiplegia/Hemiparesis affecting non-dominant side **438.22**
- Late effects of Cerebrovascular Disease**
  - Monoplegia of lower limb affecting unspecified side **438.40**
  - Monoplegia of lower limb affecting dominant side **438.41**
  - Monoplegia of lower limb affecting non-dominant side **438.42**
  - Spina Bifida with Hydrocephalus, unspecified region **741.00**
  - Spina Bifida with Hydrocephalus, cervical region **741.01**
  - Spina Bifida with Hydrocephalus, dorsal (thoracic) region **741.02**
  - Spina Bifida with Hydrocephalus, lumbar region **741.03**
  - Spina Bifida without Hydrocephalus, unspecified region **741.90**
  - Spina Bifida without Hydrocephalus, cervical region **741.91**
  - Spina Bifida without Hydrocephalus, dorsal (thoracic) region **741.92**
  - Spina Bifida without Hydrocephalus, lumbar region **741.93**
  - Osteogenesis Imperfecta **756.51**
  - Traumatic Amputation of leg(s) (complete) (partial) unilateral at or above knee without complication - Traumatic Amputation of leg(s) (complete) (partial) Bilateral (any level) complicated **897.2 – 897.7**

This information is not intended to be, nor should it be considered billing or legal advice. Providers are responsible for determining the appropriate billing codes when submitting claims to the Medicare Program and should consult an attorney or other advisor to discuss specific situations in further detail.